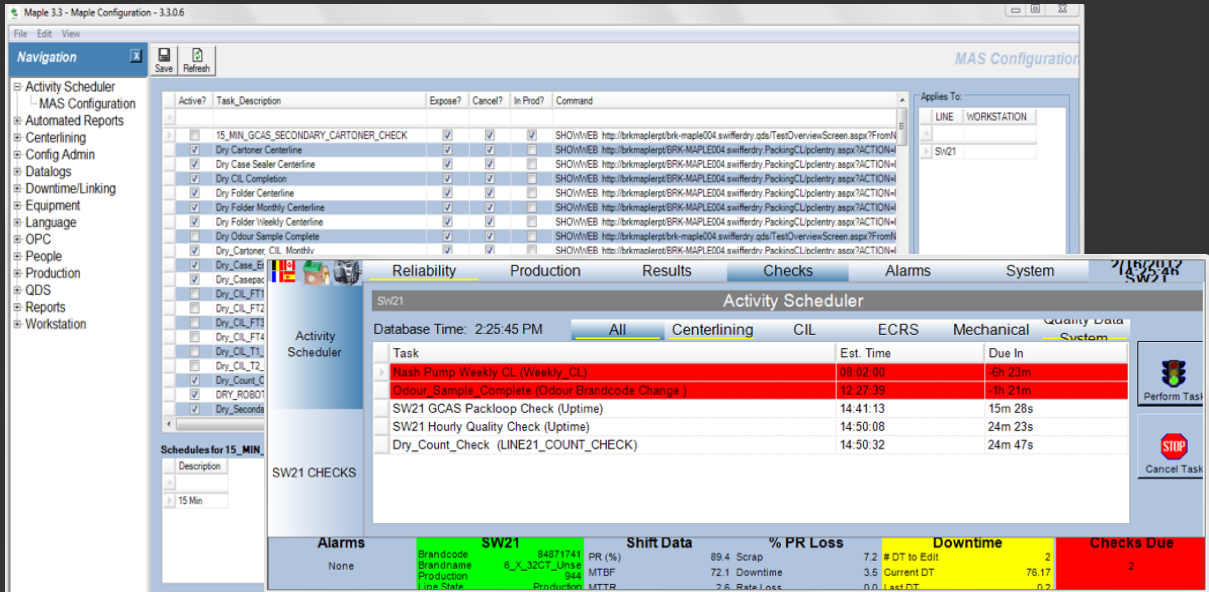


MAPLE ACTIVITY SCHEDULER



Fully Automated Task Notification and Tracking Module

The MAPLE Activity Scheduler (MAS) is a versatile and widely utilized component that directs the plant floor resources. It also directs and notifies the operators of activities as they become available. This includes a combination of notifications that range from production line activities to maintenance checks.

The Activity Scheduler is integrated with other MAPLE components such as Clean, Inspect, Lube (CIL), Centerline, Quality Data Systems (QDS) and Line Event Data System (LEDS). The module notifies users when a task, check, or activity is to be performed based upon user-defined schedules. These schedules can be based on events that occur in MAPLE Suite such as brand changes and shift changes.

MAPLE ACTIVITY SCHEDULER

Key Features

- Schedules can be time-based or event-based.
- The MAPLE Suite workstation provides a user interface that notifies the user when the activity is due.
- The Activity Audit report provides an audit trail for activities performed during the selected time period.
- The system is extremely configurable so that it also interacts with bar codes.

Benefits

- Eliminate time-consuming manual tracking.
- Provides maintenance planning and scheduling prioritizes and organizes work so it can be executed in the most efficient manner.
- Ensures the allocation of needed resources and the sequence in which they are needed so any activity can be performed in the shortest time with the least cost.
- Provides linkage between the MES and scheduling.